

The Enterprise Manager Boldly Goes Forward

The Enterprise Manager (EM) has been a part of the BBj® Product Suite since BASIS introduced BBj in 2001. This powerful tool provides administrators with the ability to manage and configure one or more BBj installations in a small office setting, or across the entire enterprise. As the features in BBj (and technology in general) have grown over the years, so has the EM. This article explores just a few of the powerful features now found in the Eclipse/Browser EM.

Version 13.0 of BBj introduced a completely new EM. Instead of continuing to maintain and add to what BASIS called the 'Java EM' or 'deprecated EM', we chose to take advantage of the latest desktop, browser, and mobile technologies and pass those on to our users. What does this latest technology give our valued customers?

- **An improved, modern interface** with the ability to open multiple tabs of information at one time making it easier to manage multiple parts of multiple servers and databases simultaneously.
- The option to use the **tightly integrated BDT EM plug-in** in the new Eclipse based IDE.
- Flexibility to **run the EM on virtually any platform** including desktops (Java and Eclipse required), web browsers (no Java or any additional plug-ins required), and even mobile devices such as smartphones and tablets.
- A product where all versions are built from a single codebase using the BBj Admin API so that **each version stays up to date** with any new features, enhancements, and bug fixes; this provides the user with a common interface, regardless of whether they are running in the IDE, in a desktop browser, or from a tablet.

Superset

In BBj version 14.0, the new EM is a superset of all the features and functionality found in the now deprecated Java EM. As a result, developers, and administrators should focus on using the powerful Eclipse/Browser EM rather than the older Java EM. Now, BBj installations install a link to launch the browser-based version of the EM, making it quick and easy to get up and running with the latest technology.

Let's take a look at some of the new features in the Eclipse/Browser EM that are not present in the deprecated EM.



By Jeff Ash
Software Engineer

Multiple Tabs

Multiple tabs as shown in **Figure 1** give users the ability to have more than one item open for configuration at one time as well as information about multiple servers simultaneously. This new ability makes it much easier to compare configurations and go back and forth between panels without losing one's place. Furthermore, in the Eclipse plug-in version, users can rearrange the tabs for easy side-by-side comparisons or simply organize the panels in a more personally productive way.

Filters Open Files/Processes/SQL Connections

The new EM provides users with the ability to filter the list of open files, processes, and SQL connections to make it easier to locate the specific information required. Using the filtering feature, an administrator can locate all the processes for a particular program, or all open files for a particular user. This feature is especially helpful in large installations.

Incrementally Searches Log Files

Another very helpful feature is the ability to search for strings of text in server log files (see **Figure 2**). The search feature is incremental and has the option of only highlighting matching text or completely filtering out lines that do not have matching text.

Improves User Experience and Mobile Capability

BASIS significantly improved the user experience with plans for more improvements coming all the time. Currently, we have segmented the wizards into more easily digestible pages, categorized items in the navigation tree, given users multiple tabs to allow rearranging the workspace layout, simplified security management, and much more. Since the browser and Eclipse versions of

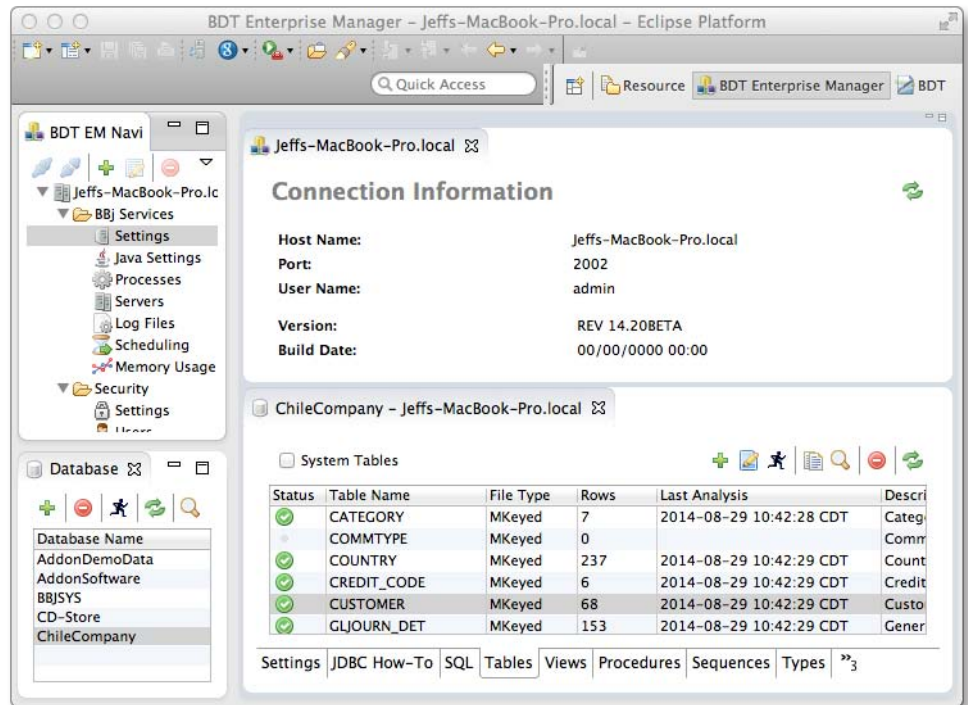


Figure 1. Multiple rearranged tabs in the Eclipse Enterprise Manager plug-in

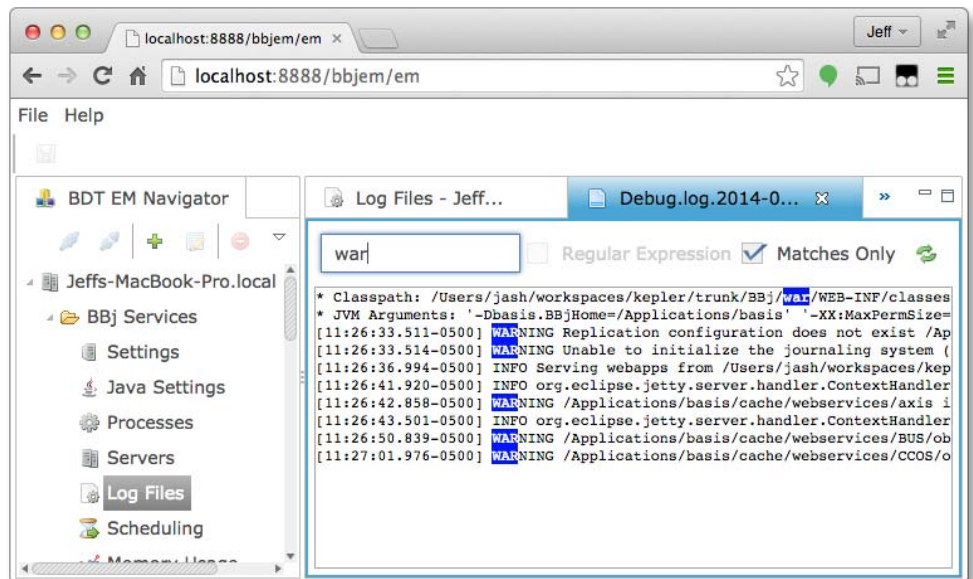


Figure 2. Incrementally search the contents of log files

the EM use the same codebase, the user experience is almost identical whether in Eclipse, a desktop browser, or a mobile device as shown in **Figure 3**.

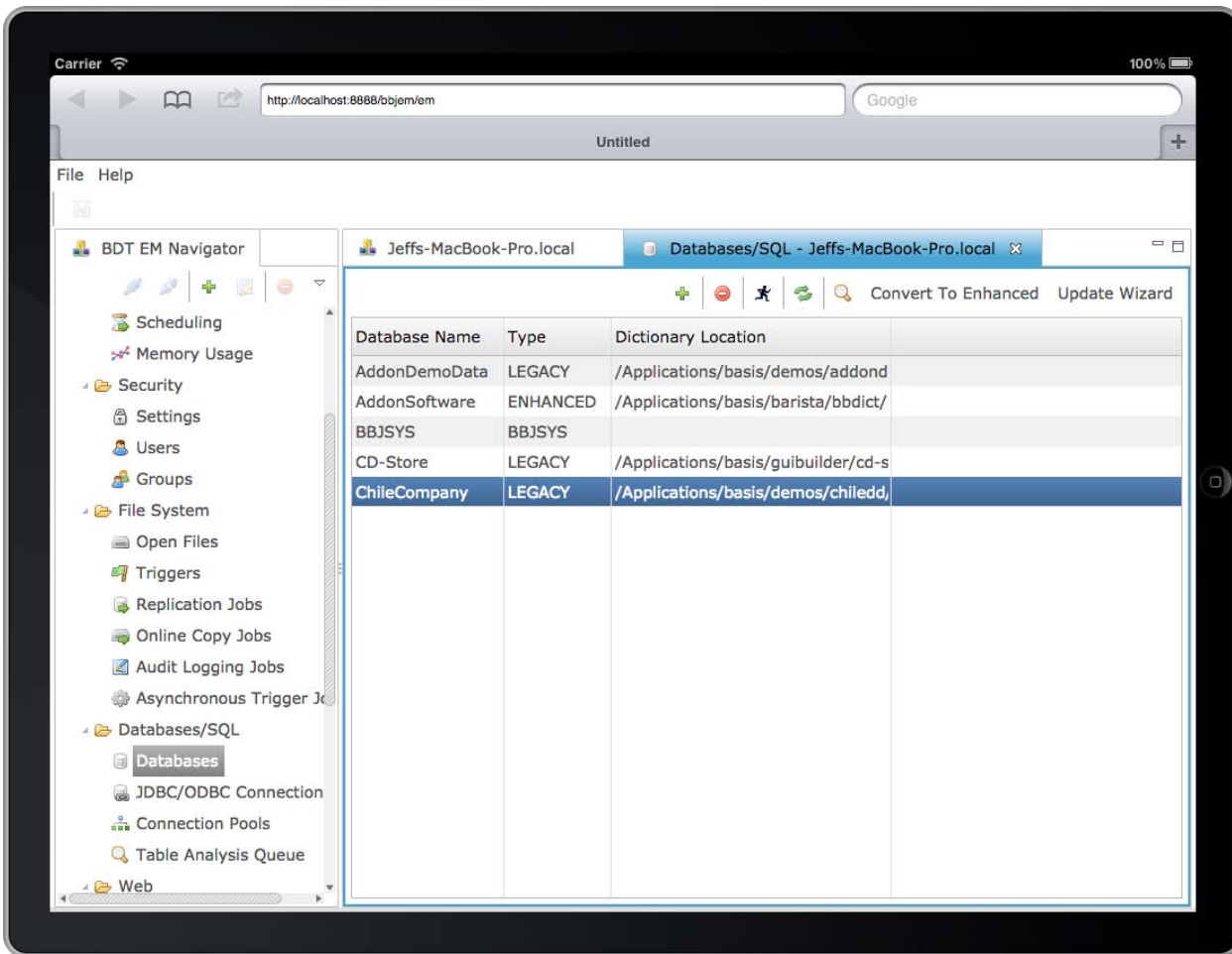


Figure 3. Use the Enterprise Manager on your favorite tablet or phone

Summary

The EM has grown from a simple configuration tool in BBj 1.0 to a powerful application for managing, configuring, monitoring, and testing all BBj installations across the enterprise. With the ability to run on a desktop, in a browser, and even on mobile devices, the flexibility of the latest evolution of the EM is sure to improve the productivity of all BBj developers, administrators and end users. Give the new Enterprise Manager a try, and “*Live long and prosper*” with the newest way to manage your enterprise. ■

