

# Customizing Fonts in Barista

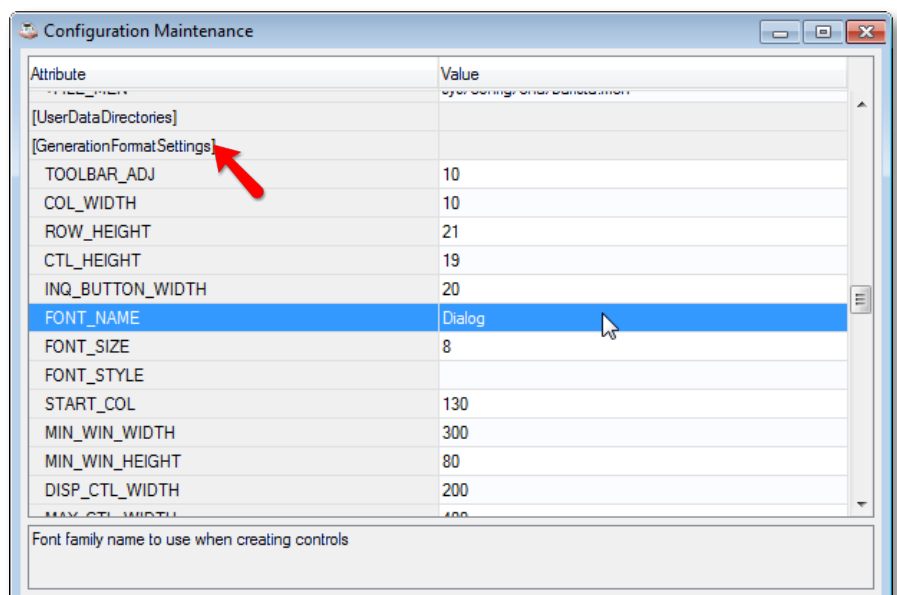
A popular item on the wishlist for the Barista® Application Framework was the request to specify font attributes used on forms built by Barista. While the default font is great for some, other users desired a way to customize the font family and, in particular, the font size in order to improve readability. Barista now allows application developers to specify the font family name, size, and style at three different levels when building forms.

## The Default Level

The highest level or “default level” appears under “Barista Development/Configuration.” Barista uses the settings at this level if not overwritten at the form or column level. About half way down through the list of settings, you can see the block “[GenerationFormatSettings]” as shown in **Figure 1** and the three font related settings FONT\_NAME, FONT\_SIZE, and FONT\_STYLE.



**By Ralph Lance**  
Software Engineer



**Figure 1.** Configuration dialog

**FONT\_NAME** – The font family name “Dialog” is the default installed with Barista. It is a font in all Java Virtual Machine (JVM) implementations and maps to an actual font contained on the host system. Refer to [Font Mnemonic](#) in the online BASIS Help for a list of fonts delivered with the JVM and BBj®.

**FONT\_SIZE** – The font size is the number of points and set to 8 as the default during a Barista installation.

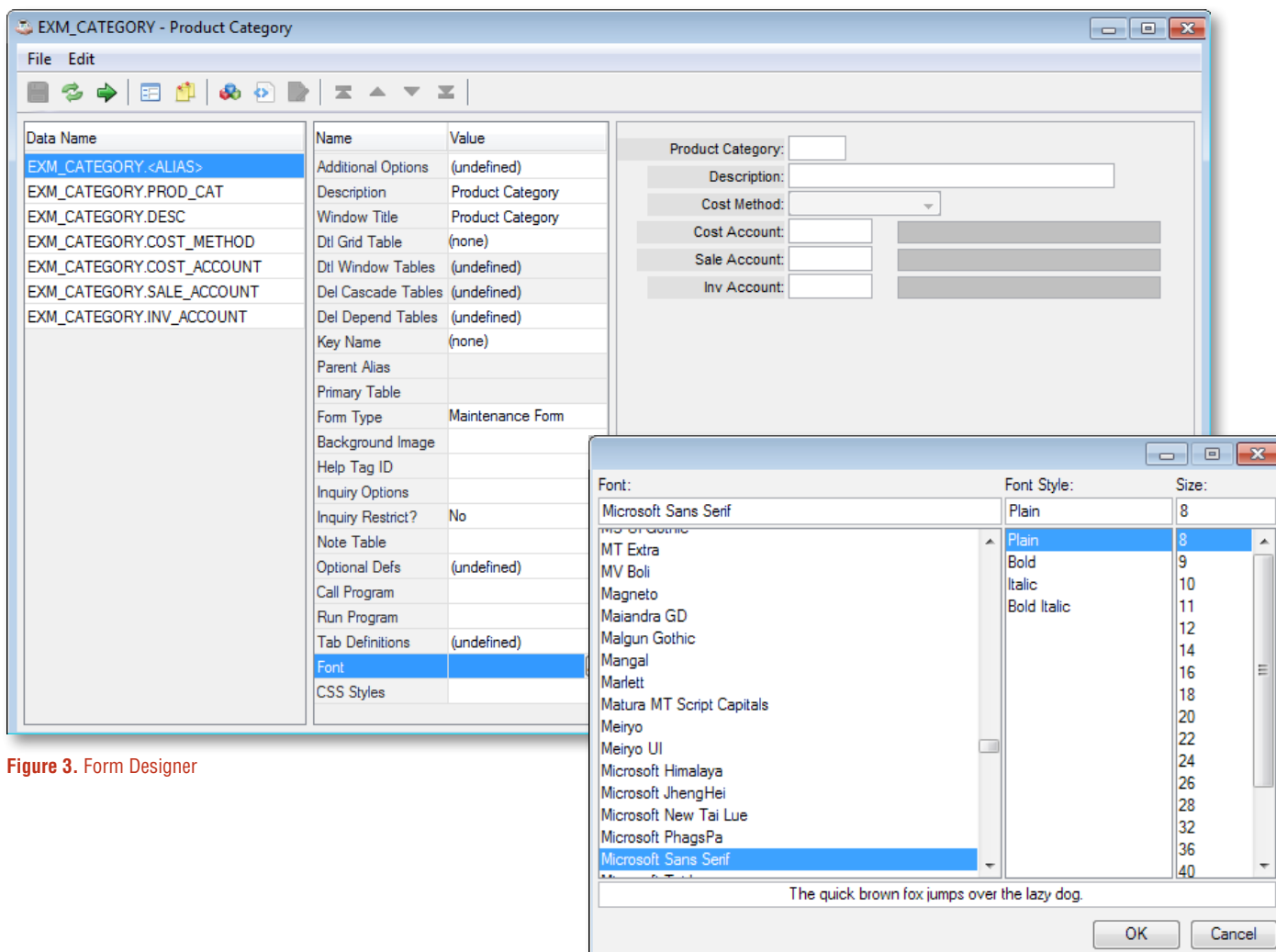
**FONT\_STYLE** – The font style is the numerical value for the style with 0 (PLAIN) being the default. The numerical values may be specified and are additive for combined effects as shown in **Figure 2**.

### The Form Level

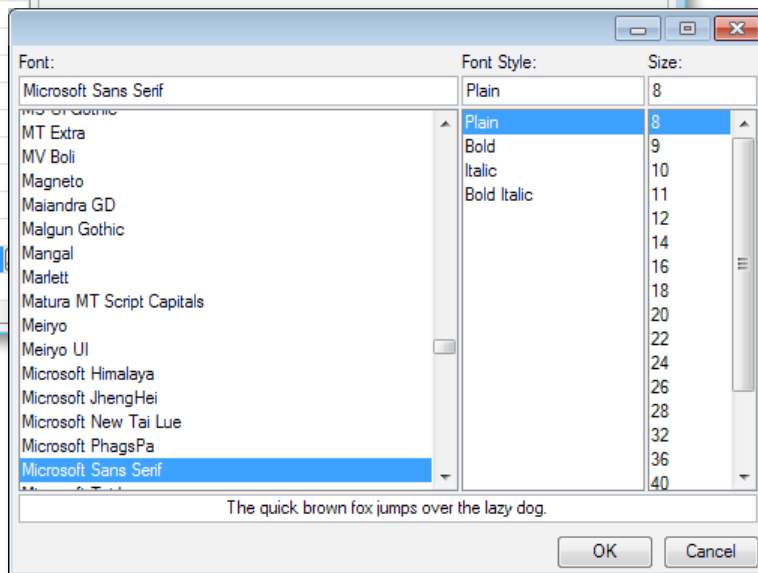
Access the form level via the menu “Barista Development/Form Manager” and double-clicking on a table alias name to load the form definition in the Form Designer. For our demonstration, we’ll be using the Barista Examples Product Category alias “EXM\_CATEGORY” as seen in **Figure 3**.

STYLE	NUMBER
PLAIN	0
<b>BOLD</b>	1
<i>ITALIC</i>	2
<u>UNDERLINE</u>	16

**Figure 2.** Font values




**Figure 3.** Form Designer



**Figure 4.** Font Chooser

The first entry in the list of data (column) names on the left is the so-called “Alias” entry. When selecting this item, a list appears of attributes applied to the overall form. Our concentration will be on the attribute named “Font” highlighted in **Figure 3**.

Although one may type in the Font attribute value, there is a more convenient way. By doubling-clicking on the grid cell query button  containing the ellipsis to the right of the “Font” cell shown in **Figure 3**, the Font Chooser window appears as shown in **Figure 4**.

The Font Chooser returns the chosen font family, size, and style in a special format that Barista then saves and parses for use by all labels and input controls on the form, assuming that fonts aren’t set at the column level. The format of the font data is [**<font name>**,**<style>**,**<size>**], for example [**Microsoft Sans Serif,1,10**].

After changing the form font attribute, simply refresh the graphical representation of the form to show the effects of the new font as seen in **Figure 5**. Running the form at this point shows that the field labels and values in the input controls reflect the form font.

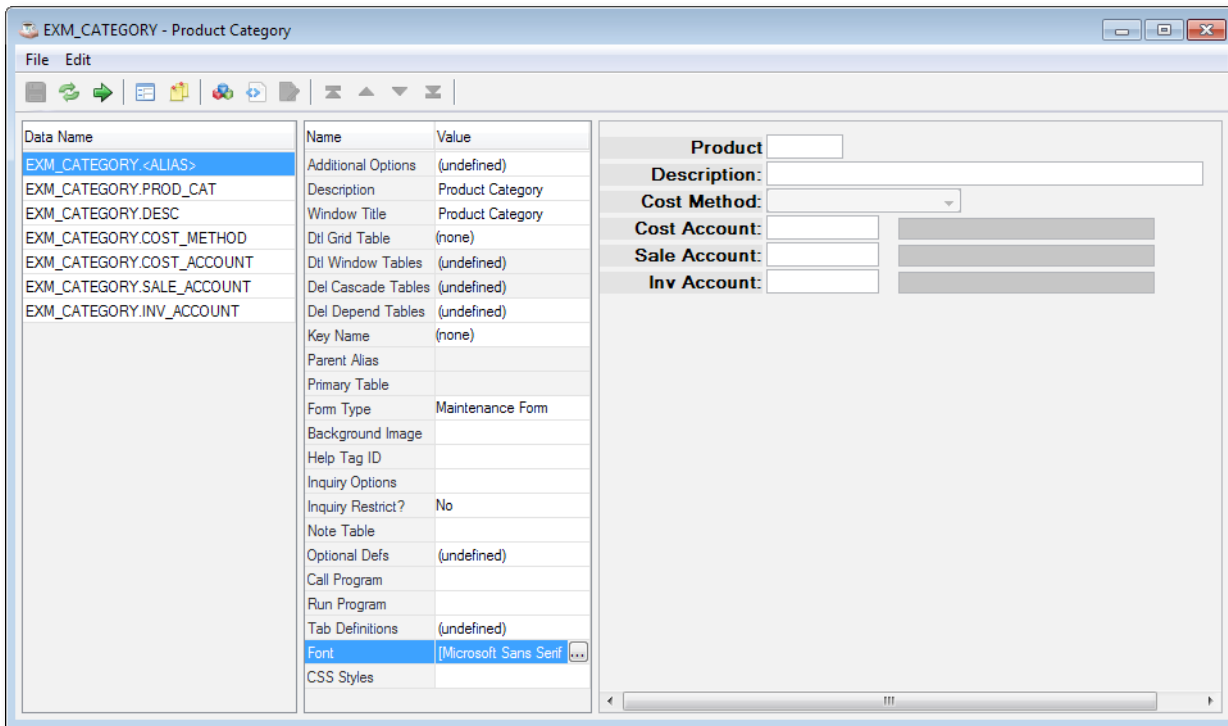


Figure 5. Form refreshed after font changes

## The Column Level

The most specific level in which to set a font is the field or column level. Similar to the form alias, just select a column either from the list of data names on the left or by clicking the field in the graphical frame, and enter or choose the "Font" attribute for the column. If the form font is set to [Microsoft Sans Serif,1,10] as **Figure 5** illustrates, then changing the "Description" column to [Microsoft Sans Serif,0,8] and running the form would result in the change shown in **Figure 6**.

## Removing Font Data

The form and column font attribute values are editable grid cells, so their value is removable by simply double-clicking in the cell, pressing [Delete] and then [Enter]. Don't forget to rebuild the form for any changes to take effect at runtime. Doing so for the form and column fonts we set in this article returns the form back to the original that uses the default font attributes from the Barista configuration (**Figure 7**).

## Summary

The new capability of setting fonts now gives application developers the power to add character to their Barista forms. Modifying the typeface for an application allows customization of various aspects of the text, including the the font itself, the letter spacing native to the font, the leading or spacing between multiple lines, and so on. By taking advantage of this new Barista feature, your users will be happier and more productive than ever! ■

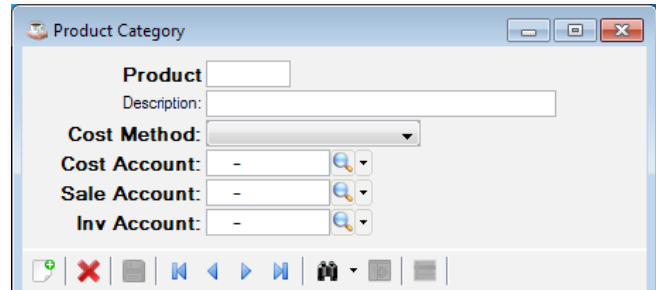


Figure 6. Form with a single column font change

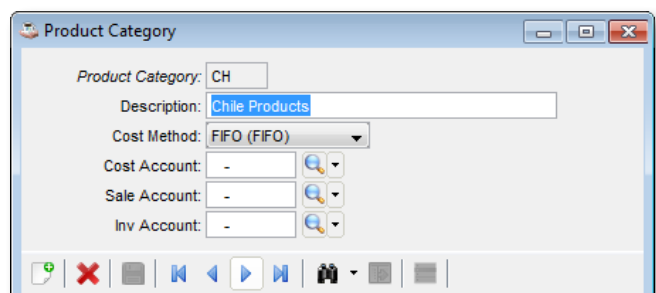


Figure 7. Original form



For more information, go to [Font Mnemonic](#) in the online documentation