



## Double Your Pleasure With Eclipse Plug-in Documentation

**P**erhaps you can figure out your new power tool without looking at the manual, but navigating the breadth of features in the new BASIS Eclipse plug-ins will likely be much more challenging. Documenting the new BBJ Enterprise Manager and BASIS Development Tools is a hefty project but one that is well underway to help you make the most of these great new advances.

But where are the docs located for easy viewing? If they are inside the plug-in, how do I read about installing it if I don't have it installed?

### In BASISHelp

Whether you spend time in the documentation that you downloaded to your local drive or view it online at [links.basis.com/basishelp](http://links.basis.com/basishelp), you will find the Eclipse documentation in the table of contents under *Development Tools > Eclipse Plug-ins* as shown in **Figure 1**.

To view the documentation for the BDT and Enterprise Manager plug-in documentation pages directly, go to these easy-to-remember short links: [links.basis.com/bdthelp](http://links.basis.com/bdthelp) and [links.basis.com/emhelp](http://links.basis.com/emhelp). Each link opens the first topic of the guide

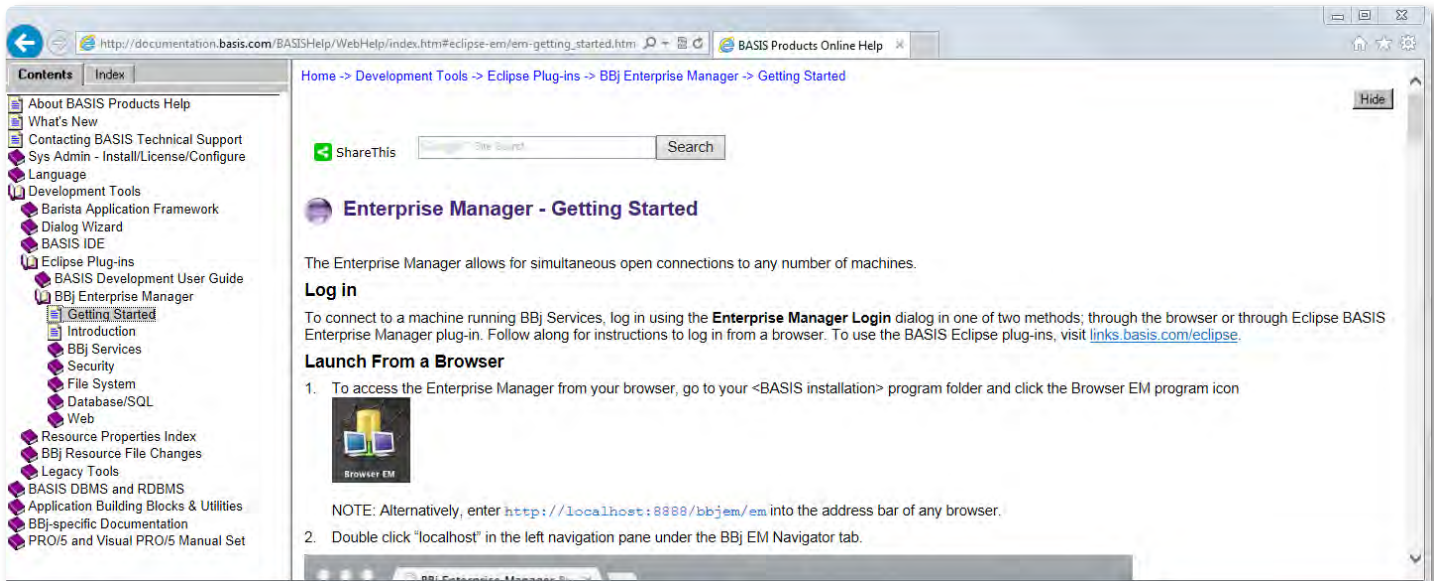


**Figure 1.** Eclipse plug-in docs in BASISHelp



**By Susan Darling**  
Technical/Marketing Writer

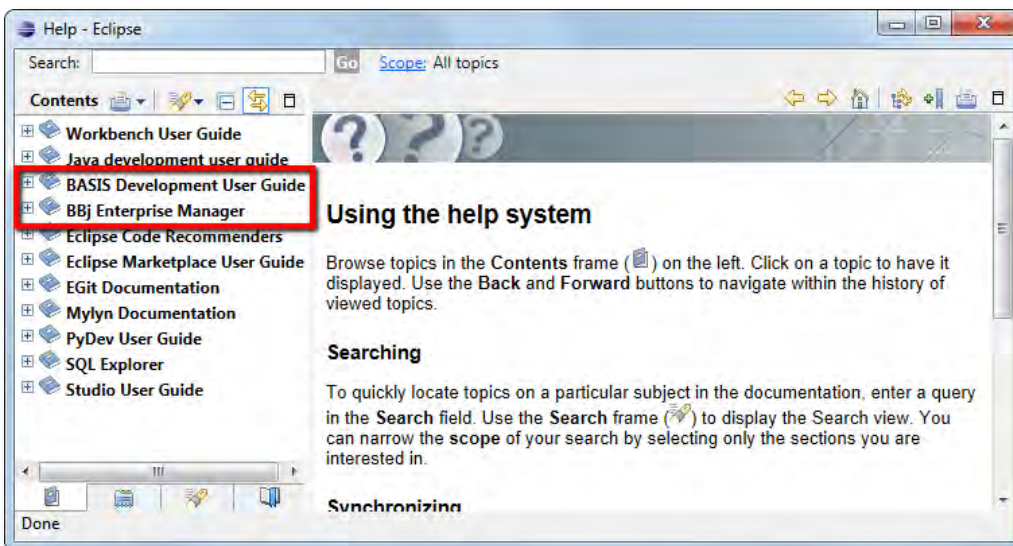
inside the BASIS documentation and displays the expanded table of contents entry in the left navigation pane as shown in **Figure 2**. Note the [Hide] button in the upper right corner of the topic; click it to “hide” or “show” the table of contents.



**Figure 2.** The result of the “emhelp” short link that directly displays the first topic

## In Eclipse Help

In addition, all the plug-in topics appear within their respective Eclipse installations. To access the documentation inside Eclipse, click on Help > Help Contents and a window opens that lists the documentation for all of the installed



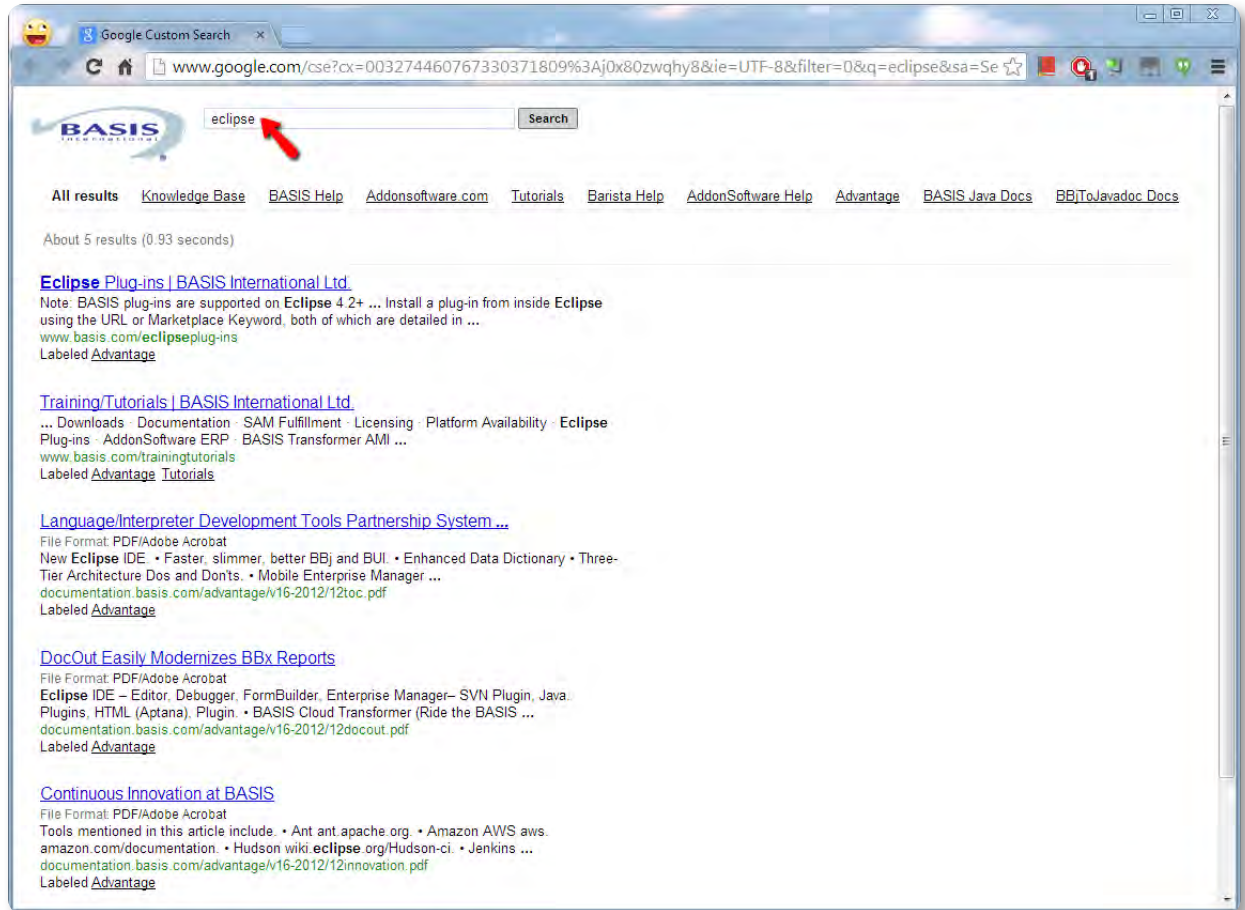
**Figure 3.** Documentation for the BASIS plug-ins appearing in the Eclipse Help window

plug-ins. **Figure 3** is an example of this Help window showing the new BASIS plug-ins.

## Google Custom Search Engine Help

Lastly, if you don’t know where to look for the help you need for your plug-in question, just ask Google via the Custom Search Engine box on every page of [www.basis.com](http://www.basis.com) and on every page of the documentation as well. This allows the Google search engine to sort through all of the documentation on the website in tutorials, *The BASIS Advantage* articles,

and knowledge base articles, as well as the RoboHelp documentation, to find the best help it can find for your ad hoc question about the Eclipse plug-ins. **Figure 4** shows the search results on the word "eclipse."



**Figure 4.** Searching on "eclipse" from basis.com

## Summary

So whichever is your pleasure, you easily have double the access to the documentation for the new BASIS Eclipse plug-ins; in the BASIS Help and within Eclipse. As we continue to complete and expand the various topics, both formats are updated and in sync with the latest text. The new BASIS tools in the Eclipse plug-ins are extremely powerful and very sophisticated so don't be caught wondering how they work...depend on their "manuals" to put these tools to work for you and reap the benefits they offer in your day-to-day development. Double your pleasure! ■

