



Enterprise Administration To-Go

In August 2013, [Statista](#) reported that 17.4% of global web traffic came through mobile devices while some continents saw over 25%. This volume of mobile device usage to carry out Internet-based daily tasks is only expected to grow. BASIS

sits at the forefront of this trend providing its developers the ability to deploy their standard desktop BBj® applications as an entirely browser-based application with little or no code modification using BASIS' unique browser user interface (BUI) technology. In parallel, BBj version 13.0 takes a significant step forward to provide two new powerful flavors of our Java-based administration tool; a plug-in to the BASIS Eclipse IDE and a new browser version suitable for both mobile and desktop use.

The New Enterprise Manager

BBj is a powerful application platform requiring numerous configuration capabilities including basic server settings, database management, scheduling tasks, and managing replication, just to name a few. The Enterprise Manager, which provides this administration capability, is all-new in BBj 13.0. Leveraging the power and extensible nature of the Eclipse platform, BASIS now offers the Enterprise Manager as a part of the BASIS



By Jeff Ash
Software Engineer

Eclipse IDE as well as a web-based version that utilizes the same interface in both versions. Let's take a look at the new Enterprise Manager.

Browser-based

The most prominent feature of the new Enterprise Manager (EM) its browser-based version – the Browser EM – that requires no Java on the client machine and no need for installing any plug-ins or applications. To access the Browser EM, users simply point their browser to the location of the web server that is serving up the Browser EM web application. With a default installation of BBJ Services, the built-in Jetty Web Server provides access at `localhost:8888/bbjem/em`. Users can then access the Browser EM from modern browsers in desktops and mobile devices such as iOS, Android, Windows, and BlackBerry powered tablets (**Figure 1**) and smartphones.

Multiple Configuration Tabs (Eclipse GUI Version)

Eclipse provides a nice multi-tab editor interface so administrators can now open multiple configuration items at the same time. In the Eclipse version, they can arrange these tabs in such a way as to view multiple tabs at one time, as shown in **Figure 2**.

Log File Viewer With Incremental Search

The new EM boasts an improved log file viewer that shows a list of the available log files as well as last modified information and the log file size. Administrators can open and view multiple log files at the same time. Furthermore, the interface provides the ability to perform an incremental search and filter out any lines in the log file that do not match the filter criteria. **Figure 3** is an example of EM filtering a log file to display only lines that contain the 'cust_num' value.

Filtering

Filtering is a convenient new feature in both the Eclipse and Browser EM that greatly simplifies the process of locating specific information within a large set of open files, processes, database connections, etc. Expand the "More Options" disclosure icon at the top of a list (if available) to see the filtering options. Filtering is easy using a dropdown to select the field to filter, the

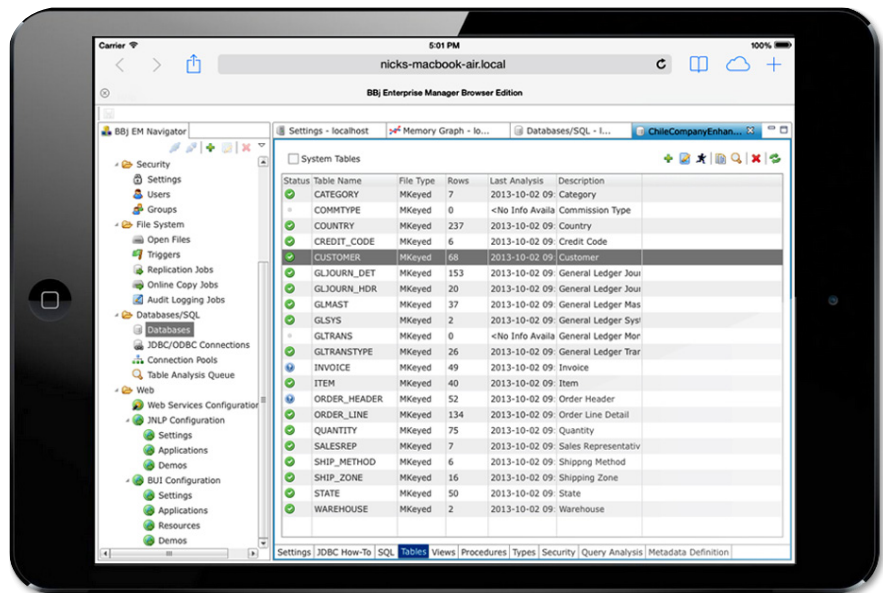


Figure 1. Enterprise Manager running on an iPad mini in Mobile Safari

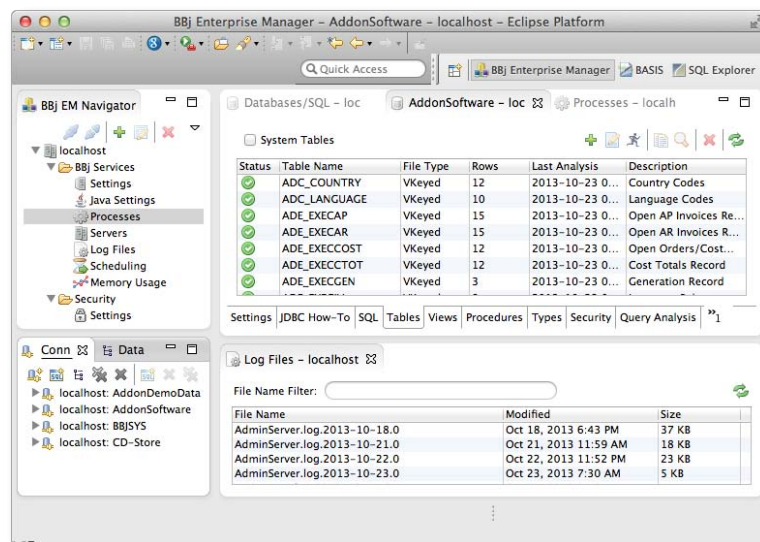


Figure 2. Displaying multiple tabs on both the left and right side of the interface

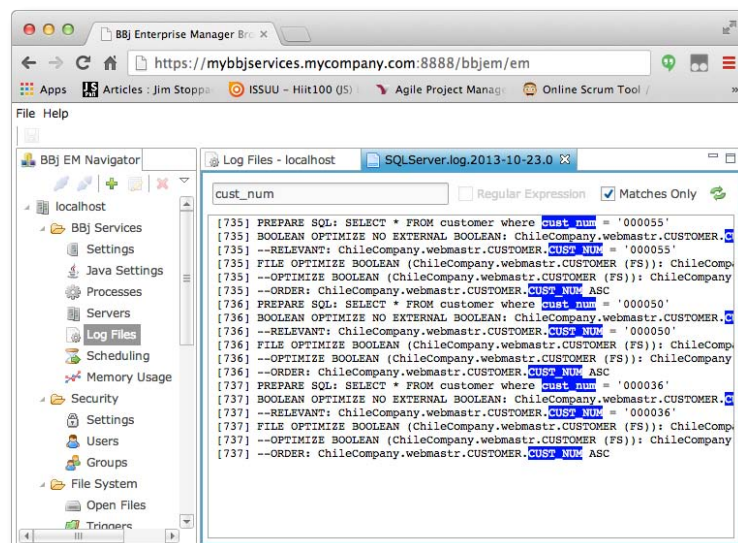


Figure 3. Filtering the contents of the SQLServer log file in a browser

operator for the comparison such as equals, greater than, less than, contains, and even regex (regular expression matching); and a logical AND/OR for multiple filter criteria.

Figure 4 illustrates this capability with a filtered the list of open files that show only those files whose names contain the string ARM and are opened by the user grobled.

SQL Explorer (Eclipse GUI Version)

Included with the EM is the SQL Explorer plug-in. This Eclipse plug-in provides a powerful interface for building and executing queries. Some of the features include unlimited results, syntax color coding, executing multiple semi-colon delimited SQL statements, query history, database introspection, ability to connect to third party databases, and much more.

Figure 5 shows EM's capability to execute multiple SQL statements and display the results in a separate tab.

Summary

The features highlighted in this article are just a few of the capabilities in the new BBJ Enterprise Manager. Administration is now possible using the BASIS Eclipse IDE or from any compatible web browser, whether on a remote PC, tablet, or even a smartphone. As BASIS continues to grow this exciting new component of its suite of tools, developers can expect to see more and more features to make the job of administering all aspects of BBJ, both from the office or on the go, even easier. All of the features in this tool are made possible through a published and documented API, so that the community may utilize any of these features in their own applications and custom written utilities that they desire. ■

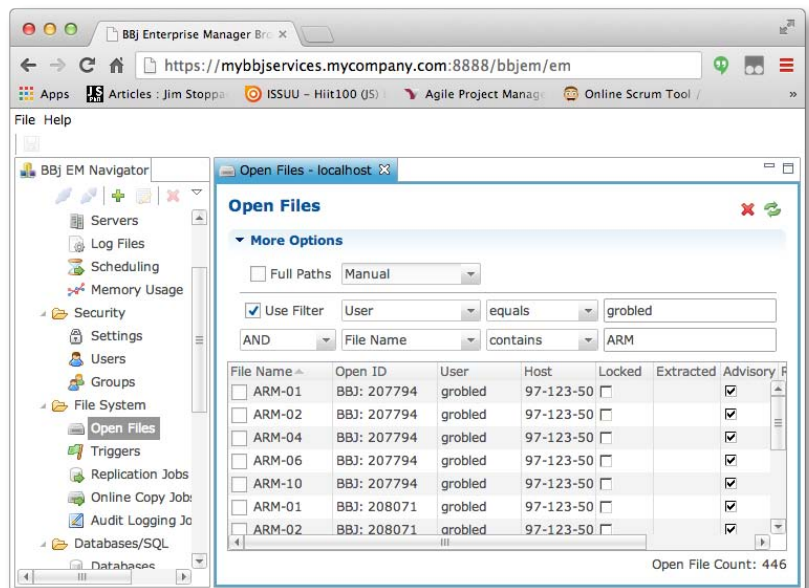


Figure 4. Filtering the list of open files for a particular user and partial filename

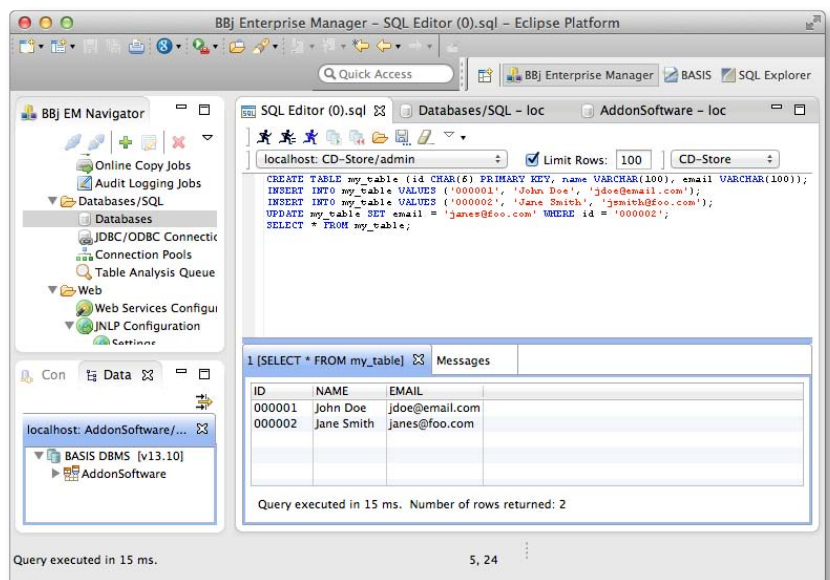


Figure 5. Executing multiple SQL statements in a row and displaying the results

**Sit back and enjoy a
30-minute presentation
with BASIS!**

www.basis.com/java-break-basis

