



Soon after BASIS introduced the Barista® Application Framework to the BASIS product suite, ASCI of Miami was quick to recognize the benefits of implementing the RAD tool's built-in feature-function into their own solution, and getting SQL access to their data. Enabling ASCI to add powerful features beneficial to their end-users that ASCI did not have to develop made this an easy decision. With a broad offering of applications for their vertical market, ASCI strategically planned to implement their application migration in two phases.

Phase 1

In the first phase, ASCI introduced improved navigation (see **Figure 1**) through an all-new multiple document interface (MDI) with enhanced search/sort capability, new report output options, tables/forms creation, and role-based security with an audit trail – all built-in features of Barista. More specifically, users immediately enjoyed these significant time savers and new security measures:

- **Navigate through the more user-friendly and structured menus of Barista**, providing a more modern and easier, more consistent, user experience within the programs.
- **Open multiple windows simultaneously using the new MDI**, allowing quick and efficient navigation through several open ASCI windows and in so doing, increase productivity.
- **Search and sort by any field in an inquiry window** or create custom inquiries, giving the user access to the data that empowers them to make informed business decisions.
- **Output reports in PDF, XML, XLS, HTML, CSV and Google doc formats**, equipping users with the ability to create their own reports and provide them the ability to archive the reports in the format that best suits their needs – otherwise only available from expensive third party packages.



By Susan Darling
Technical/Marketing Writer

ASCI Partakes RADically From the Barista Cup

- **Have tables and forms created for them with the desired look-and-feel**, allowing customization “just the way you like it.”
- **Implement role-based security with an audit trail, right down to the field level**, offering security and the confidence that only authorized users can make changes with an automatic record of the database changes.

As of this writing, ASCI has already completed the first few Phase 1 installations of ASCI - Powered by Barista (**Figure 2**) and is receiving very positive feedback. ASCI Programming Manager Alex Castellanos says,

“We are confident that Barista will meet our technology requirements to allow us to meet our customer needs well into the future. We love how the user interface works and the way Barista moves...it is very fast. We are glad we made this move and are anxious to upgrade all our customers to the new ASCI - Powered by Barista solution.”

Phase 2

In this next phase, currently in process, ASCI is extending the Phase 1 features across all their remaining ASCI modules including Export Procedures, Warehouse Procedures, AMS, and Accounting. ASCI has committed several programmers as well as Quality Control personnel to this project and are making great progress in the conversion. In addition, ASCI is converting their Data Entry programs to take full advantage of Barista. Barista provides ASCI the ability to develop their user interfaces much more quickly and efficiently.

Since ASCI can now more quickly customize and enhance their customers' programs, ASCI can provide better, faster, and more affordable customer service.

Castellanos describes their experience learning Barista,

“We did not find the learning curve so difficult. Most of our staff had experience working with this kind of development tool. Also, the online training sections and online tutorials helped us to get familiar with the basics of Barista.”

Castellanos sees many benefits that will carry them far into the future.

“I see many things that will result in a better product for our clients...rapid software development, standard programming routines and callpoints, and how easy it is to create new forms and applications, and to organize and maintain our database system.”

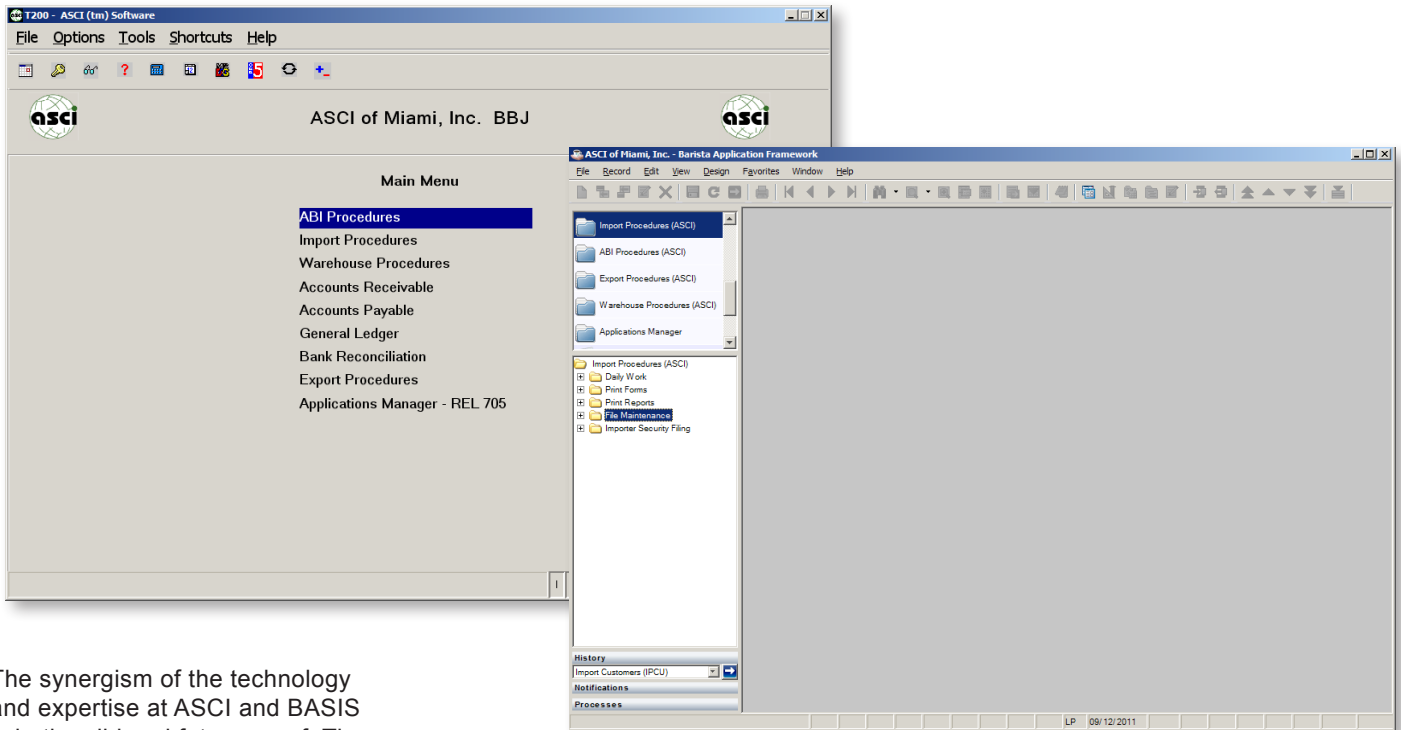


Figure 1. The main menu before (left) and after (right) in the new ASCII - Powered by Barista

The synergism of the technology and expertise at ASCII and BASIS is both solid and future-proof. The ever-changing technology landscape presents ongoing challenges and opportunities with such advances as the cloud and mobile computing. Barista and the underlying language – Java-powered BBj® – deliver a broad eco-system for deployment on a variety of popular operating systems and browsers. Barista applications run on a multitude of platforms and operating systems; equally well with a single operating system or with a mix of Microsoft Windows, Linux/UNIX, and Mac OS/X. These technology components serve as the foundation for modern business application solutions, fully cloud-enabled and mobile capable, all from a single code base in the Java-made-simple world of BBj.

The future for ASCII is secure and bright. Follow their example and RADically change your GUI application with Barista's out-the-box new features and functions. More than just a RAD tool, Barista's framework delivers building block components built into the product. ■

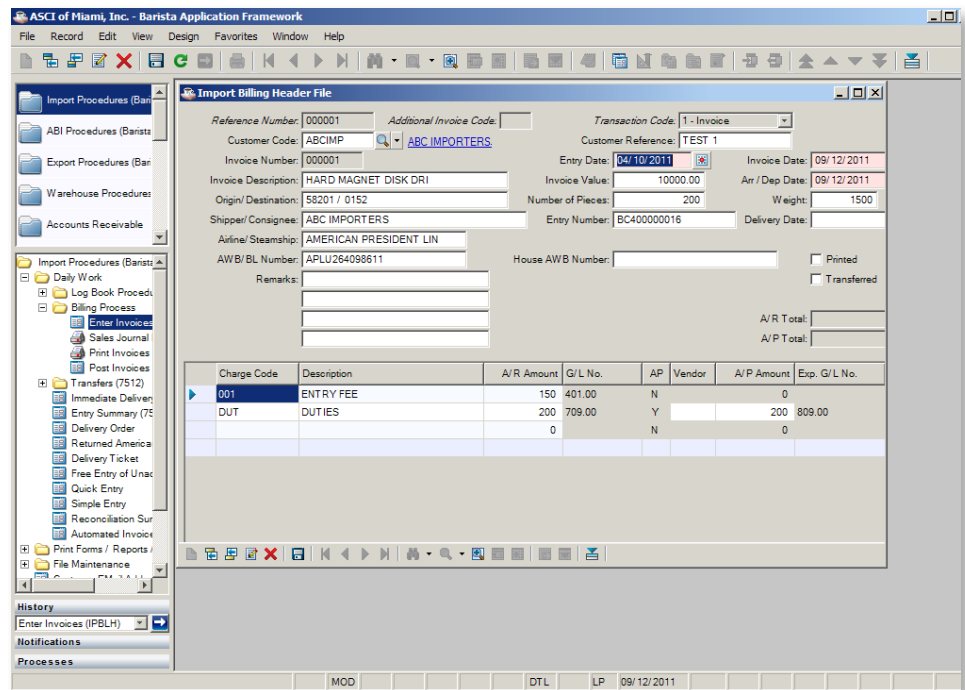


Figure 2. Billing in the new ASCII - Powered by Barista

ASCII of Miami (www.asciomi.com) is a developer and distributor of a complete software solution for U.S. Customs brokers, importers, freight forwarders, and other parties involved in cross-border trade. ASCII is aggressively adopting BASIS' best-of-breed technology to catapult their customers onto their newest state-of-the-art solution. Integrating new features into their original Visual PRO/5® architected software solution, ASCII is taking a giant leap forward. Over 300 satisfied customers currently run the ASCII Software System across the U.S. and in Puerto Rico.

