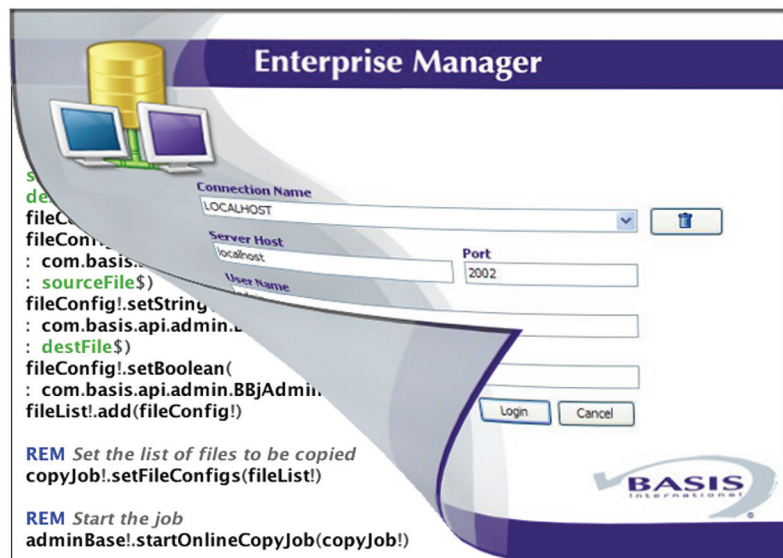


# Enterprise Manager Functionality Free at Last



**T**he BBj® Enterprise Manager (EM) is a powerful application that provides a user interface for performing various administrative tasks on a BBj Services installation and its databases. In BBj 10.0, BASIS introduces a new Admin API that allows application developers to access the powerful features found in the EM, programmatically, from their BBj applications. Furthermore, an application can perform these administrative tasks on the server to which it is connected or another server on the same network.

## What Can I Do?

You might be asking, “Sounds great, but what would be some of the things I might want to do”? Here are a few examples of tasks an application can perform without user interaction or by using a different application interface:

- Add/remove user accounts to the BBj system
- Create/remove a database
- Determine who has exclusive access to a record or file
- List and/or terminate running BBj processes or ODBC/JDBC database connections
- Start, abort, finish, or monitor online copy jobs for backup purposes or large file structure updates
- Start, abort, or monitor table analysis jobs
- Change database configuration settings
- Change server configuration settings
- Perform a database update/merge operation found also in the powerful new *Database Update Wizard* in the EM (see page 36 in this issue)
- Much, much, more!

## How Can I Access This Functionality?

Accessing the Admin API functionality is very simple from any BBj application. The code in **Figure 1** demonstrates how an application gains access to the Admin API. >>



By Jeff Ash  
Software Engineer

**REM** Use declare statements so that the BASIS IDE can help you using  
**REM** its powerful code completion.

```
declare com.basis.api.admin.BBjAdminBase adminBase!
declare com.basis.api.admin.BBjAdminList adminList!
```

```
dbserver$ = "localhost"
dbport = 2002
dbssl = 0
```

**REM** Note that the user specified here must have permission to  
**REM** perform the desired tasks. Check the EM if there is a question.

```
user$ = "admin"
password$ = "admin123"
adminBase! = com.basis.api.admin.BBjAdminFactory.getBBjAdmin(
: java.net.InetAddress.getByAddress(dbserver$),
: dbport,
: dbssl,
: user$,
: password$)
```

**Figure 1.** Sample code of how an application gains access to the Admin API

```

REM Create the copy job
copyJob! = adminBase!.createOnlineCopyJobConfig()

REM Make a list to hold the list of files for the job
fileList! = copyJob!.getFileConfigs()

REM Add a file to the copy job
sourceFile$ = "C:/Program Files/basis/demos/chiledd/data/CUSTOMER"
destFile$ = "C:/Program Files/basis/demos/chiledd/data/CUSTOMER.bk"
fileConfig! = copyJob!.createFileConfig()
fileConfig!.setString(
: com.basis.api.admin.BBjAdminOnlineCopyJobFile.SOURCE_FILE,
: sourceFile$)
fileConfig!.setString(
: com.basis.api.admin.BBjAdminOnlineCopyJobFile.DEST_FILE,
: destFile$)
fileConfig!.setBoolean(
: com.basis.api.admin.BBjAdminOnlineCopyJobFile.AUTO_RECORD_SIZE, 1)
fileList!.add(fileConfig!)

REM Set the list of files to be copied
copyJob!.setFileConfigs(fileList!)

REM Start the job
adminBase!.startOnlineCopyJob(copyJob!)

```

**Figure 2.** Sample code that demonstrates how to create an online copy job programmatically

The adminBase! object in this example provides the top level of access to the Admin API. Using the Javadoc documents found in the online BBj documentation under Language > BBjAPI > Java APIs, a developer can locate the methods and classes they need to perform their necessary operations. To help get developers started, the code in **Figure 2** continues from the previous example and demonstrates how to create an online copy job, programmatically.

### Summary

BASIS responded to the requests of their customers and as of version 10.0, BBj now has the ability to perform EM-related tasks, programmatically, from within any BBj application. Using the powerful Admin API, developers can perform administrative tasks, server configuration, database updating and migration, file backups, and more, completely under their own control. This feature puts one more powerful tool into the hands of developers to make their applications even more robust and easy for their programmers to manage. ■



Try the sample at [links.basis.com/emcode](http://links.basis.com/emcode)

[next article >>>](#)



**Visit** [links.basis.com/TechCon2011](http://links.basis.com/TechCon2011)

**Viva BASIS TECHCON Las Vegas**  
May 9<sup>th</sup>-11<sup>th</sup> 2011  
*Virtualization is value added*

Photo credit: Las Vegas News Bureau