

The FAQs About 64-Bit BASIS Products

By Janet Smith

W

ith an increasing number of operating systems vendors offering 64-bit versions, BASIS Technical Support is often asked if BASIS offers 64-bit products that will run on these operating systems. This article answers which BASIS products are available in 64-bit versions and common questions regarding downloading and installing.

Q Does BASIS offer any 64-bit ports? How do I know if there is a 64-bit product available for my operating system?

A Yes, BASIS introduced 64-bit products for BBj® 6.0 and PRO/5® 6.0. In addition to a 64-bit operating system, this version of BBj 6.0 requires the installation of a 64-bit JVM (Java Virtual Machine) on the operating system. A complete listing of our products and operating systems is published on the Platform Availability page at www.basis.com/products/availability.html.

Q How do I read the Platform Availability report?

A The Platform Availability list is organized in sections; first by product, then by operating system. Locate the section for the product you wish to install (BBj, PRO/5, etc.) then look for your specific operating system. To the right of the operating system appears the associated BASIS port ID, revision level, and the product release date. The BBj product list also includes the Java version under which we tested BBj. Likewise, the PRO/5, Visual PRO/5®, and ODBC products show the operating system levels used for testing.

Q How does this report differentiate a 32-bit port from a 64-bit port?

A A (64-bit) notation appears after each operating system description that offers a 64-bit product as shown in **Figure 1**. Additionally, all 64-bit port IDs start with the number 6.


Compaq Tru64 UNIX (64-bit) Java 1.4.2-5	6175	6.0	05-Jun-2006	
--	------	-----	-------------	---

Figure 1. A port with a 64-bit notation

The Platform Availability page also indicates when a 64-bit product is bundled with a 32-bit product for BBj; both port IDs for the operating system appear in the same color band. For the PRO/5 product family, the 32- and 64-bit ports are not bundled together and exist separately in the list of available ports.

Figure 2 and **Figure 3** compares the appearance of a bundled 64-bit port and a 64-bit only port.


IBM AIX	2184	6.0	05-Jun-2006	
IBM AIX (64-bit) Java 5.0.0.1 (AIX 5.3)	6184			

Figure 2. A 64-bit port bundled with the 32-bit version


Linux Power5 (64-bit) Java 5.0	6146	6.0	05-Jun-2006	
-----------------------------------	------	-----	-------------	---

Figure 3. An unbundled 64-bit port with no available 32-bit version

Q Okay, I found a 64-bit BBj port for my operating system and verified my installed JVM is the correct version. How do I download the correct product from the download page?

A First, go to “[BBj Downloads](#)” on the BASIS **Products | Downloads** Web page. Select the desired release type such as “Current Release Product Version 6.0” from the **Release Type** section. Once the release is selected, select the platform that corresponds to your Operating System from the **Platform** section. The selection should indicate that a 64-bit BBj is available for your Operating System.

Once you choose the correct operating system and complete the download form, you will receive a download file that starts with either a **2** (32-bit) or **6** (64-bit). If your download filename begins with a **2**, the 64-bit port is bundled with the 32-bit product. Most 64-bit ports are bundled with the 32-bit ports’ download jar file. This means the same single download file will install both 32-bit and 64-bit ports on their respective operating systems.

Q If the 64-bit BBj product I downloaded is bundled with 32-bit product, how do I install the 64-bit product?

A Start the installation as normal. The screen shown in **Figure 4** appears during this process and requests the location of Java (JVM) version installed on the system. Simply select the 64-bit JVM and the install correctly configures BBj to use the 64-bit JVM.

continued...



Janet Smith
Technical Support
Supervisor

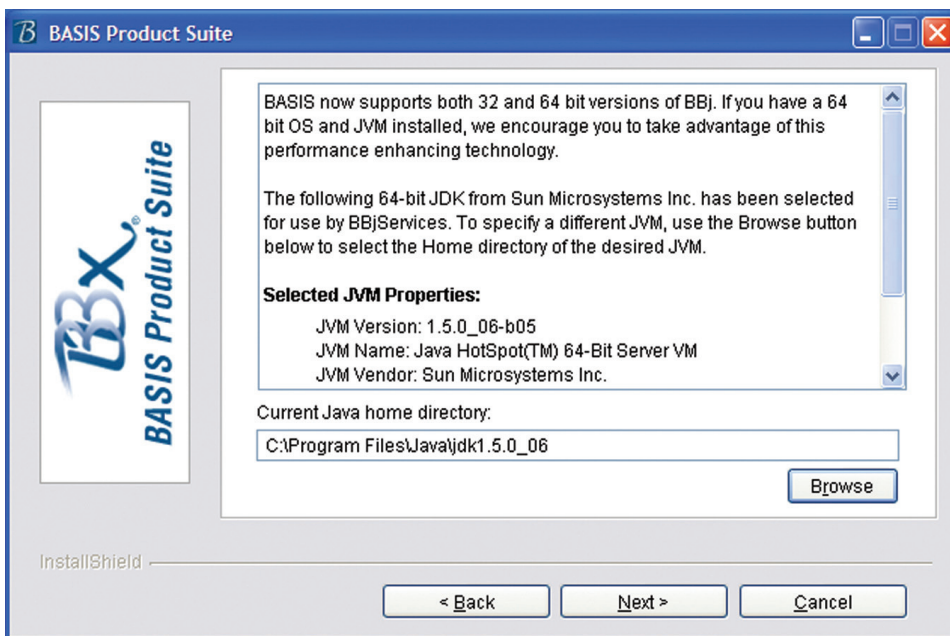


Figure 4. Screen shot requesting the location of the 64-bit JVM



For more information about this installation, refer to the

- Installation notes in the BBj 6.0 readme at www.basis.com/products/bbj/readme600.htm
- Online documentation for installing BBj
for Windows www.basis.com/online/docs/documentation/whcsh_home.htm#id=27000
for UNIX www.basis.com/online/docs/documentation/whcsh_home.htm#id=23003

Q I have both a 32-bit and 64-bit JVM installed on my system. When I ran the installation, I incorrectly chose the 32-bit JVM. Do I have to re-install BBj before I can use the 64-bit JVM?

A No, you can run Enterprise Manager to correctly configure BBj Services to use the 64-bit JVM. Follow these steps:

1. Connect to the server running BBj.
2. Enter the user name and password. The default admin user is admin with the default password of **admin123**.
3. Double click on the “JVM Settings” node. The Application Java Settings dialog box (**Figure 5**) now appears, displaying **Default** as the “Application” type and the pathname of the JVM that BBj is currently using, as the “Java Home” field.
4. Click [Browse...] and locate the correct location of the 64-bit JVM.
5. Click [OK].
6. Double click on the “JVM Settings” node once again.
7. Click on the drop down menu in the “Application” box and select “BBjServices.”
8. Browse to same location used for the “Default” JVM.
9. Exit Enterprise Manager
10. Run the BBj Admin utility and stop and start BBj Services to apply the change.

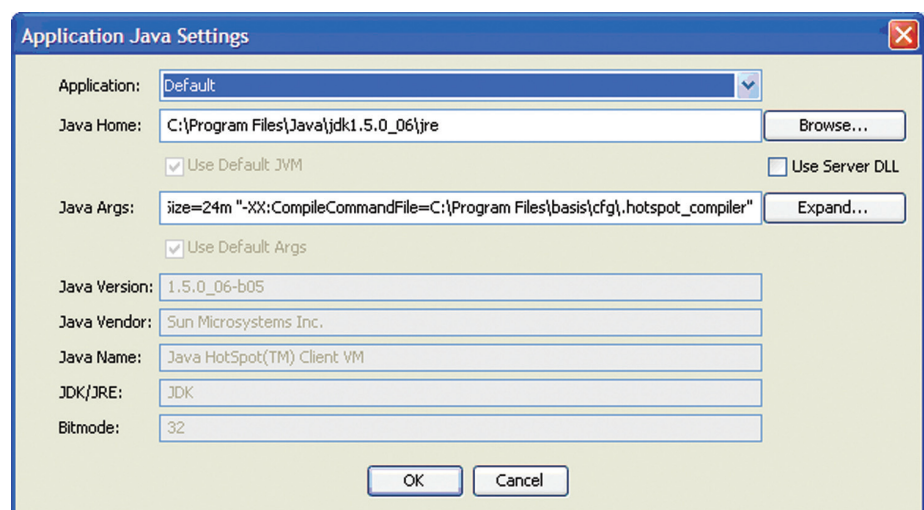


Figure 5. The Java setting dialog box in Enterprise Manager

Exercise caution when using this method. Selecting an incorrect JVM will prevent BBjServices from starting. If this situation occurs, uninstall and reinstall BBj to correct the problem.

